

SCHOOL OF
MUSIC, THEATRE & DANCE
UNIVERSITY OF MICHIGAN

Find Your Path

A GUIDE FOR FUTURE STUDENTS

2023-24



August 1, 2023

Applications Open

December 1, 2023Undergraduate/Graduate*
Application Deadline**December 1, 2023**

Financial Aid Applications Open

January/February 2024

SMTD Auditions/Interviews

March 15, 2024

SMTD Admissions Decisions Out

March 31, 2024

Financial Aid Applications Due

April 1, 2024

SMTD Scholarship Decisions Out

April 15, 2024

Graduate Decision Deadline Day

May 1, 2024Undergraduate Decision
Deadline Day**May 6, 2024**

Housing Applications Due

June-August 2024

Orientation

August 26, 2024

First Day of Classes at SMTD

Visit smtd.umich.edu/admissions
for the most up-to-date deadlines.

**Some graduate programs have different
deadlines, see page 17.*

The SMTD Experience

An extraordinary education. Boundless opportunities to explore and collaborate. Mentorship from a world-class faculty of scholars and artists. Belonging to an inclusive, supportive community of peers in one of the best college towns in the country. At the University of Michigan School of Music, Theatre & Dance – a renowned school of performing arts housed within a leading Big 10 university – your experience will be as multifaceted as you are.

We acknowledge that the University of Michigan resides on the ancestral, traditional, and contemporary lands of the Anishinaabeg – The Three Fire Confederacy of the Ojibwe, Odawa, and Potawatomi Nations, as well as the Wyandot Nation. In particular, the university resides on land gifted by the three Nations and the Wyandot Nation, along with many other Indigenous Nations, in the 1817 Treaty of Fort Meigs. We acknowledge the language of “gift” in the original treaty entails mutual relationships between treaty parties, respect, and obligation on the part of the settlers. We advocate for Indigenous struggles against ongoing settler-colonization and strive for a decolonized future.

"Growing up in Ann Arbor, I've been going to U-M's theatrical productions for as long as I can remember. Those productions are a large part of the reason I chose to pursue theatre, and I couldn't pass up the opportunity to be a part of them."



Tate Zeleznik

BFA '27, Design & Production
Ann Arbor, MI

Join Our Vibrant Community

The 2023–24 SMTD Community

820 Undergraduate Students	773 Music Students
272 Graduate Students	157 Theatre Students
215 Faculty Members	88 Musical Theatre Students
5:1 Students-to-Faculty	74 Dance Students
93% Student Retention	

Incoming First-Year Class Profile

3.76 Average GPA	41.1% are Asian, Black, Hawaiian, Hispanic, or multiracial U.S. citizens & permanent residents
30 Average ACT	
1346 Average SAT	11.8% are first-generation students
26.3% Michigan Residents	65.8% Out-of-State Residents
	7.9% International Students

Conservatory Life at a World-Class Public University

As an SMTD student, you will have the rare opportunity to engage in a rigorous performing arts curriculum – exploring abundant opportunities to perform, collaborate, conduct research – while also being immersed in the larger University of Michigan realm. Liberal arts coursework constitutes an important part of every SMTD major, but you can choose to go further, pursuing a minor or a dual degree at any U-M school or college. Choose from among 1500 student organizations – or start your own. Participate in a research project through U-M's Undergraduate Research Opportunity Program. Join the fun on football Saturdays. Create your own customized, unforgettable experience.



Customize Your Education

1 in 5 SMTD students pursued a double major within SMTD or a dual degree with a unit outside of SMTD in 2022-2023. The most popular dual degrees are cognitive science, computer science, economics, electrical engineering, English, neuroscience, and psychology.

8 minors within SMTD:
dance • global & ethnic performance studies
• music • musical theatre composition
• performing arts management & entrepreneurship • playwriting • popular music • theatre design & production

Explore Our Degree Offerings

Undergraduate Degrees

Bachelor of Fine Arts (BFA)

Dance
Interarts Performance
(with Stamps School of Art & Design)
Jazz & Contemplative Studies
Musical Theatre
Performing Arts Technology
Theatre Design & Production
Theatre Performance
Acting, Directing

Bachelor of Music (BM)

Composition
Jazz & Contemporary Improvisation
Music & Technology
Music Education
Choral, Instrumental, Jazz
Music Theory
Musicology
Performance
Piano, Winds & Percussion, Strings, Organ, Voice

Bachelor of Musical Arts (BMA)

Multidisciplinary Studies
Performance
Piano, Winds & Percussion, Strings, Organ, Voice

Bachelor of Science (BS)

Sound Engineering

Bachelor of Theatre Arts (BTA)

Bachelor of Arts (BA)

Music



Explore our offerings and find a degree tailored to your interests at myumi.ch/AWM1p



Graduate Degrees

Master of Arts (MA)

Composition
Media Arts

Master of Fine Arts (MFA)

Dance

Master of Music (MM)

Chamber Music
Collaborative Piano
Composition
Conducting
Band/Wind Ensemble, Choral, Orchestral
Early Keyboard Instruments
Improvisation
Music Education
Performance
Piano, Winds & Percussion, Strings, Organ, Voice
Piano Pedagogy and Performance
Sacred Music
Wind Instruments

Specialist in Music (SM)

Chamber Music
Collaborative Piano
Performance
Piano, Winds & Percussion, Strings, Organ, Voice

Doctor of Musical Arts (DMA)

Collaborative Piano
Composition
Conducting
Band/Wind Ensemble, Choral, Orchestral
Jazz & Contemporary Improvisation
Performance
Piano, Winds & Percussion, Strings, Organ, Voice
Piano Pedagogy and Performance

Doctor of Philosophy (PhD)

Composition & Music Theory
Music Education
Music Theory
Musicology
Ethnomusicology, Historical
Performing Arts Technology

Graduate Certificate

Arts Entrepreneurship & Leadership
Musicology
Music Theory Pedagogy

We're Dedicated to Your Success

Our faculty are highly skilled and dedicated teachers who are deeply committed to student support and success. They are also celebrated artists and scholars – they grace the world's stages, lead scholarly journals, and conduct and play in internationally renowned bands and orchestras – all while providing students with thoughtful instruction and unparalleled knowledge.



"I could not be more excited to lead SMTD's historic and exceptional band program into its next chapter with a clear reverence and pride for the tradition that was built before us, but also an incredible commitment to moving art forward in an inclusive and innovative music-making community."

Jason Fettig
Director of Bands



Meet Our Faculty

Learn more about our talented faculty! To view our full list or search by academic department, please visit myumi.ch/ez8gy



Creativity Lives Here

From the historic Hill Auditorium, one of the world's greatest concert halls, to the Brehm Technology Suite, a hub for creative and technological innovation, our students perform, study, rehearse, and collaborate in a wide array of places and spaces designed to support all facets of performing arts education. Among dozens of venues and facilities across campus where students study and perform, here are a few highlights of the buildings that play an important role in daily life at SMTD.

Dance Building

With 24,000 square feet of performance and academic spaces, the Dance Building features four large, flexible studio-classrooms, including a performance venue with seating for more than 100 and a dedicated screendance studio.

Earl V. Moore Building

The Moore Building includes classrooms, a dedicated music library, studios, and practice rooms for study, creation, and collaboration. The William K. and Dolores S. Brehm Pavilion includes a student common area, two performance halls for large ensembles, two rehearsal halls, a high-tech lecture hall, and the state-of-the-art Brehm Technology Suite.

Walgreen Drama Center

The sleek and modern home for musical theatre and theatre & drama students includes the Arthur Miller Theatre, Stamps Auditorium, state-of-the-art classrooms, and studios for design, sound, screen acting, and performance, as well as extensive theatre shops.

Bell Towers

Ann and Robert H. Lurie Carillon and the Baird Carillon in the Burton Memorial Tower

U-M boasts two bell towers, one on North Campus and one on Central Campus, which serve as campus landmarks and enable frequent carillon performances throughout the year.

Arthur Miller Theatre

A flexible performance space used for theatre & drama and musical theatre, this intimate venue can accommodate proscenium and thrust stage configurations and an audience of up to 280.

Hill Auditorium

This 3,500-seat concert hall (pictured here) is renowned for its impeccable acoustics and is the home for our orchestra, band, and choir performances.

Lydia Mendelssohn Theatre

In this 600-seat theatre, many of our smaller, more intimate theatre, musical theatre, dance, and opera productions are held.

Power Center for the Performing Arts

This 1,300-seat theatre is primarily used for our dance, musical theatre, theatre, and large-scale opera performances.

Stamps Auditorium

This 450-seat auditorium is home to classes, rehearsals, exhibits, and performances of all kinds.

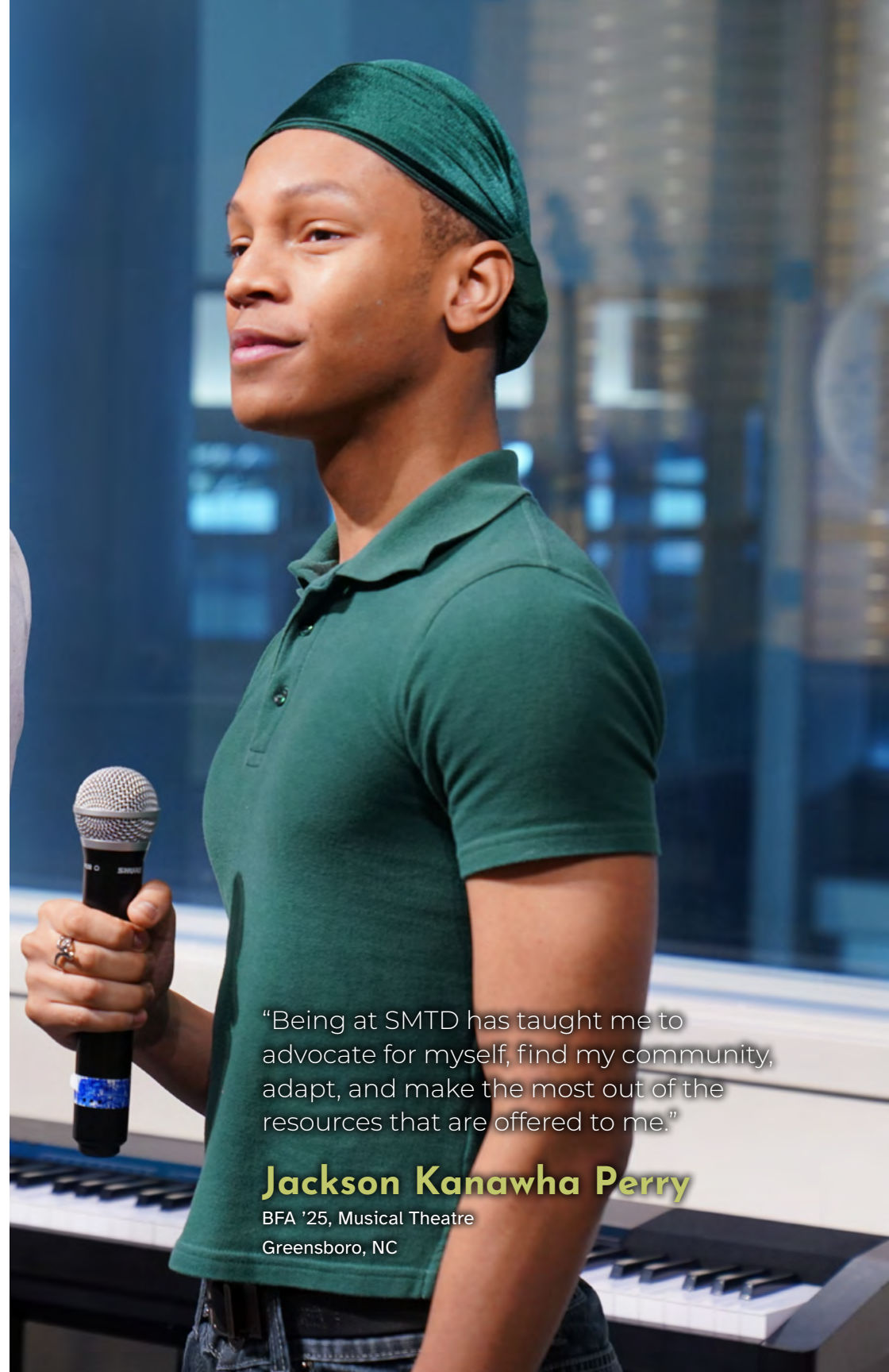


Learn more about our campus and take a virtual tour, please visit myumi.ch/zwD9d

We Are Better Together

At SMTD, we embrace the notion that academic and artistic excellence is inseparable from an unwavering commitment to diversity, equity, and inclusion. The SMTD Office for Diversity, Equity & Inclusion provides indispensable resources, grant funding, professional development, and guidance to the community as well as abundant opportunities for students to get involved. DEI principles and goals are infused throughout every aspect of the school, with students acting as essential agents of change.

The SMTD community values inclusivity in the broadest possible terms, encompassing the equitable and fair treatment of all. We aspire to create a learning environment and curriculum fully representative of diversity, not only with respect to markers such as race, ethnicity, social class, sexuality, religion, gender, and ability, but also diversity of thought, experience, and outlook upon the world.



“Being at SMTD has taught me to advocate for myself, find my community, adapt, and make the most out of the resources that are offered to me.”

Jackson Kanawha Perry

BFA '25, Musical Theatre
Greensboro, NC



Engage Your Entrepreneurial Spirit

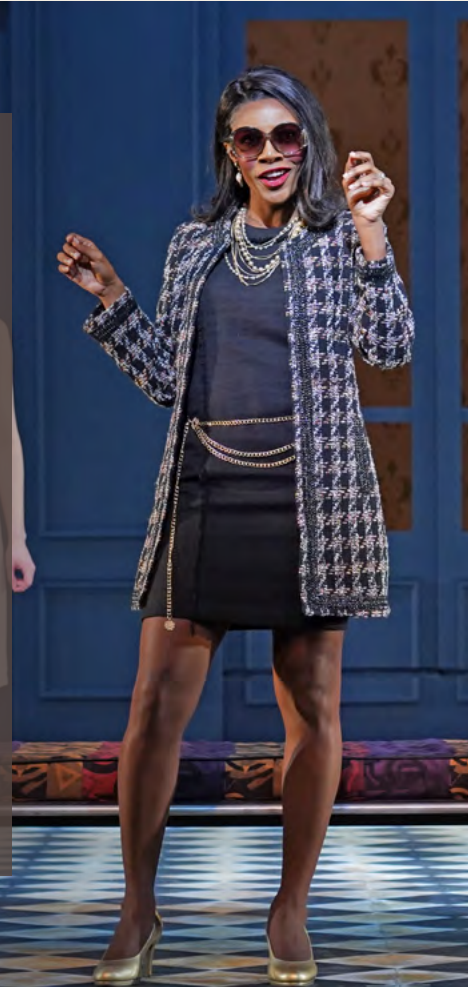
In the EXCEL Lab, you will find the resources you need to launch and sustain a life in the arts. EXCEL is committed to supporting you as you consider career paths, seek meaningful internships, and develop entrepreneurial initiatives, helping you emerge from Michigan poised to claim your individual leadership potential.

We take a personalized, collaborative approach to professional development by exploring your individual vision and goals and then connecting you with the resources you need to thrive. Through workshops, one-on-one mentoring, and more than \$100,000 in student project and venture funding, EXCEL will help you turn your ideas into action.

“EXCEL was the most influential and impactful part of my four years at U-M and is responsible for so much of my professional growth. EXCEL nurtured me as an artist, a visionary, and a 20-something-year-old trying to figure out what to do with my life.”

Samantha Rose Williams

MM '20, SM '22, Voice Performance
Alexandria, VA



During the 2022-23 school year...

1,094 students attended an EXCEL coaching session, event, or class

53 projects were funded through the Enterprise Fund

5 teams were funded as part of the EXCELerator entrepreneurial fellowship program

6 Impact Awards and 1 EXCEL Prize were awarded for a total funding of \$30,000

285 students had coaching appointments

323 students attended EXCEL-sponsored events

53 students participated in immersion trips to Chicago and NYC

13 students were placed in paid internships with EXCEL partner organizations and awarded funding for housing & transportation through the Internship Fund

36 newsletters were published with **100+** unique jobs, internships, and professional opportunities (U-M and beyond!)

158 free headshots were provided to students, faculty & staff in partnership with Stagetime.com

Prioritize Well-Being

SMTD prioritizes your well-being, which is crucial for a successful arts career. Tailored services address the unique demands of performing artists, ensuring expert care to help you thrive.

First-year students receive musculoskeletal screenings and personalized home exercise programs. Hearing screenings, free earplugs, voice evaluations, nutrition counseling, wellness coaching, and individual appointments for pain or injury are available for all students. SMTD offers a rich variety of wellness programs like meditation, yoga, and preventive presentations on YouTube. For-credit classes, including Wellness for Performing Artists, Yoga, Alexander Technique, and more, are offered each semester. The Wellness Ambassador team fosters a supportive community through initiatives like the SMTD Peer-to-Peer Support Network and stress-relieving events with therapy dogs.

Additionally, a dedicated on-site counselor from Counseling and Psychological Services (CAPS) provides confidential support for students' mental health needs. CAPS offers therapy, crisis intervention, psychiatric evaluation, medication monitoring, and referrals.



“The Wellness Initiative is an incredible program offered to the students of SMTD. Students are provided with invaluable information and workshops regarding injury prevention, self-care, and injury recovery. Our Wellness Initiative is one of the many reasons SMTD is especially unique!”

Nickolas Hamblin

BM '23, Clarinet
Performance
Riverview,
MI



Wherever You Go, #ForeverGoBlue!

SMTD prepares students for success in myriad fields. Our alumni can be found onstage and behind the scenes in the world's great theatres and concert halls.. They are impacting lives in classrooms and driving change in arts organizations across the globe. Beyond the arts, SMTD alumni apply their discipline and determination to whatever path they take.

Our alumni have won **Emmys**, **Grammys**, **Oscars**, and **Tonys**. They've been selected as **MacArthur Fellows** and awarded **Pulitzer Prizes** and the **National Medal of the Arts**. They've been the bestie of **Emily in Paris**, played the title character in the hit musical **& Juliet**, and composed the music of **The Marvels**. They have overcome a stutter to create the iconic voices of **Darth Vader** and **Mufasa**. They are editors and publishers of prestigious scholarly journals across the world. They've become community leaders and advocates for diversity, equity, and inclusion by creating organizations like the **Sphinx Organization**. They have taught and pursued their research at **MIT**, **Stanford**, **Yale**, **Harvard**, and right here at **Michigan**. They have instilled a love of music in thousands of children through music education (and chances are, if you're from Michigan, you've been taught by one of **over 400 U-M alums** teaching music across the state).



“Remember who you really are, because something brought you to this. So make bold, unapologetic, unflinching, imaginative, socially defying, humanity-inducing, liberation kinda art. It’s your turn now.”

Dominique Morisseau

(BFA '00, Theatre & Drama) to the SMTD
graduating class of 2023

Take the Next Step: Applying to SMTD

Thank you for taking the time to learn more about the vibrant, diverse SMTD community. We hope you'll consider applying. SMTD is proud to have students with widely varied backgrounds, experiences, and skill sets. We look forward to talking with you about the range of our programs, our outstanding faculty, and the vast resources and opportunities available through the greater U-M community.

Applying for undergraduate admission is a two-part process. Applicants must submit:

- **Common Application** – This serves as your academic application for the U-M. You'll provide additional materials such as transcripts and SAT/ACT scores.*
- **SMTD Artistic Profile** – This is what shows SMTD faculty and staff who you are as an artist. Applicants must submit a completed Artistic Profile for each program to which the student is applying.

All application materials must be submitted on or before December 1.

**U-M is test-flexible for the 2023-24 admission cycle. Applicants will be considered regardless of their decision to test or provide test scores.*

To learn more about the SMTD Artistic Profile, please visit myumi.ch/W2b6k



"I chose to attend SMTD for its excellent faculty, breadth of resources such as the EXCEL Lab, and the wide range of live performances that happen at the university and in Ann Arbor. I love listening to and playing different kinds of music, and I'm excited that SMTD is open to people like me playing both sides of the classical/jazz aisle."

Gavin Ard

MM '25, Trumpet Performance
St. Petersburg, FL

All graduate applicants must submit an Artistic Profile application for each program to which they are applying.

In addition, doctoral, MA, MFA, and graduate certificate applicants must submit a Rackham Graduate School application.

All application materials must be submitted on or before December 1, with the exception of the following program-specific deadlines:

- **November 1:** MFA in Dance
- **December 10:** PhD in Performing Arts Technology
- **January 5:** PhD in Music Theory
- **February 5:** MM in Music Education Summer Program
- **March 15:** Certificate in Arts Entrepreneurship & Leadership

Find Answers

There are many paths that prospective students travel to gain the skills needed to be competitive for admission. If you think you're a great fit for the U-M School of Music, Theatre & Dance, we encourage you to apply!

For questions about SMTD and our admissions process:
smtadmissions@umich.edu • 734.764.0593

For questions about auditions and interviews:
smtad.auditions@umich.edu • 734.763.6677



Get to Know the Admissions Team!
myumi.ch/dkRqj

Cost, Scholarships & Financial Aid

If your dream is to attend SMTD—and you are selected for admission—we will do our best to help make your dream a reality. We are committed to admitting the most talented and promising performing artists and scholars, regardless of financial means.

We encourage you to explore all of your financial aid options—grants, scholarships, work-study, and loans—so you can pursue your dreams at Michigan. Most of our students are pleasantly surprised by how much support is available.

Visit the U-M Financial Aid page at finaid.umich.edu to explore the costs of a Michigan education for in-state and out-of-state students and to link to the Free Application for Federal Student Aid (FAFSA) using **U-M's federal code: 002325**.

Undergraduate students who wish to apply for need-based institutional grants are also required to complete a CSS Profile at cssprofile.collegeboard.org.
U-M's CSS code: 1839

SMTD encourages applicants to submit their FAFSA and CSS Profile by March 1, including all supporting materials.

SMTD commits more than \$3.5 million annually in merit-based, need-informed scholarships. We reward artistic and academic excellence while also considering a student's complete financial resources. SMTD is not able to offer scholarships to all admitted students, but we assist as many as possible each year. For more information on scholarships, visit smtd.umich.edu/admissions.



“As a first-generation student from Palestine, I have found endless opportunities at U-M, which is a very welcoming space for people of any background. I have the privilege of working with world-class professors in a wonderful academic and musical environment. Michigan has provided me with valuable connections that will enrich my SMTD experience and help me throughout my career.”

Elias Rashmawi

BM '26, Trombone Performance
Youngville, LA

A Guarantee for Michigan Residents

Many students and families across the country are concerned about the rising cost of college. For many in-state undergraduate students, attending U-M costs less today than it did a decade ago. Our Go Blue Guarantee covers the full cost of tuition for up to four years of full-time undergraduate study on the Ann Arbor campus for Michigan residents with a family income of \$75,000 or less and assets of \$75,000 or less. Some families earning more also receive tuition assistance. We are the only public university in Michigan to cover 100% of demonstrated financial need of in-state students, making U-M the lowest-cost option for them.

GoBlueGuarantee.umich.edu



FREE TUITION

For families with incomes \$75,000 and under & assets below \$75,000

TUITION SUPPORT

For families with incomes up to \$180,000

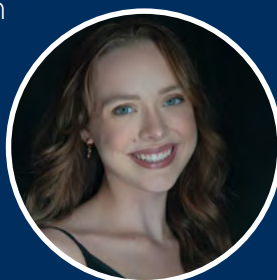
*Four years for qualifying in-state student
Ann Arbor Campus*



“It has always been a dream of mine to further my artistry as a dancer; having the opportunity to do that at Michigan is everything I could have asked for. It means so much to me that SMTD and U-M want to support the next generation of artists. Providing financial support for students makes that dream achievable.”

Alyssa Hernandez

BFA '26, Dance
Saginaw, MI



Global Exploration

At SMTD, you will have numerous opportunities to further your education abroad. You could take courses for credit independently or with SMTD faculty. You may also have the chance to perform internationally with SMTD ensembles, to attend workshops, and to participate in festivals around the globe. In the past two years, SMTD students have traveled with faculty to Mexico City; Seville, Spain (below, left); Shanghai, China; Florence and Sicily, Italy; and Mysore, India (below, right).



The information listed in this brochure is accurate as of **August 15, 2023**.
Visit **smtd.umich.edu** for the most up-to-date information about SMTD.

Meet the Dean

Thank you for your interest in the School of Music, Theatre & Dance. Our school is an incredibly collaborative, diverse community that will offer you a world of possibility. We will support your unique college experience through individualized plans of study, abundant performance opportunities, extensive career development resources, and instruction from our expert faculty. Wherever your passions lie, SMTD will help you cultivate your talents and prepare for a successful career. I encourage you to apply, and I hope to welcome you into the SMTD family.

David Gier, BM '83, Trombone Performance

Dean and Paul Boylan Collegiate Professor of Music

Photography by
Chris Boyes, Peter Smith

The Regents of the University of Michigan:
Jordan B. Acker (Huntington Woods), Michael J. Behm (Grand Blanc), Mark J. Bernstein (Ann Arbor), Paul W. Brown (Ann Arbor), Sarah Hubbard (Okemos), Denise Ilitch (Bingham Farms), Ron Weiser (Ann Arbor), Katherine E. White (Ann Arbor), Santa J. Ono (ex officio)

© 2022-23 Regents of the University of Michigan
A Non-discriminatory, Affirmative Action Employer





**SCHOOL OF MUSIC,
THEATRE & DANCE**

UNIVERSITY OF MICHIGAN

smtd.umich.edu



umichsmtd