

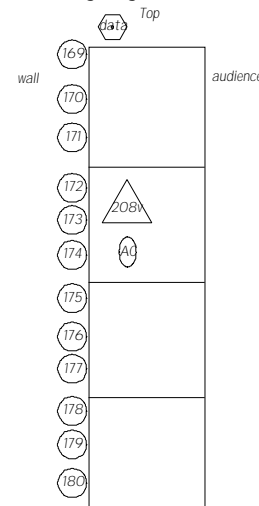
House Light Dimmers

Main Floor:
478,480,484,485,487,488,490,
491,492,493,496,498,499, 500

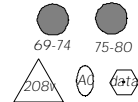
Balcony:
477,479,482,483,489,494,497

Ring Work Lights:
481,486,495

Stage Right Box Boom



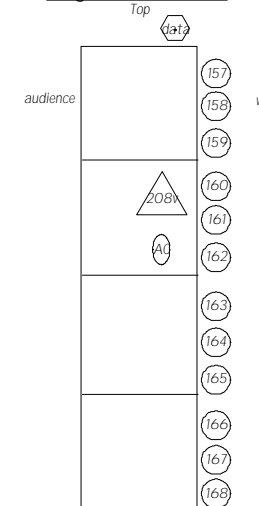
Balcony Rail
Mounted Under SR Box Boom



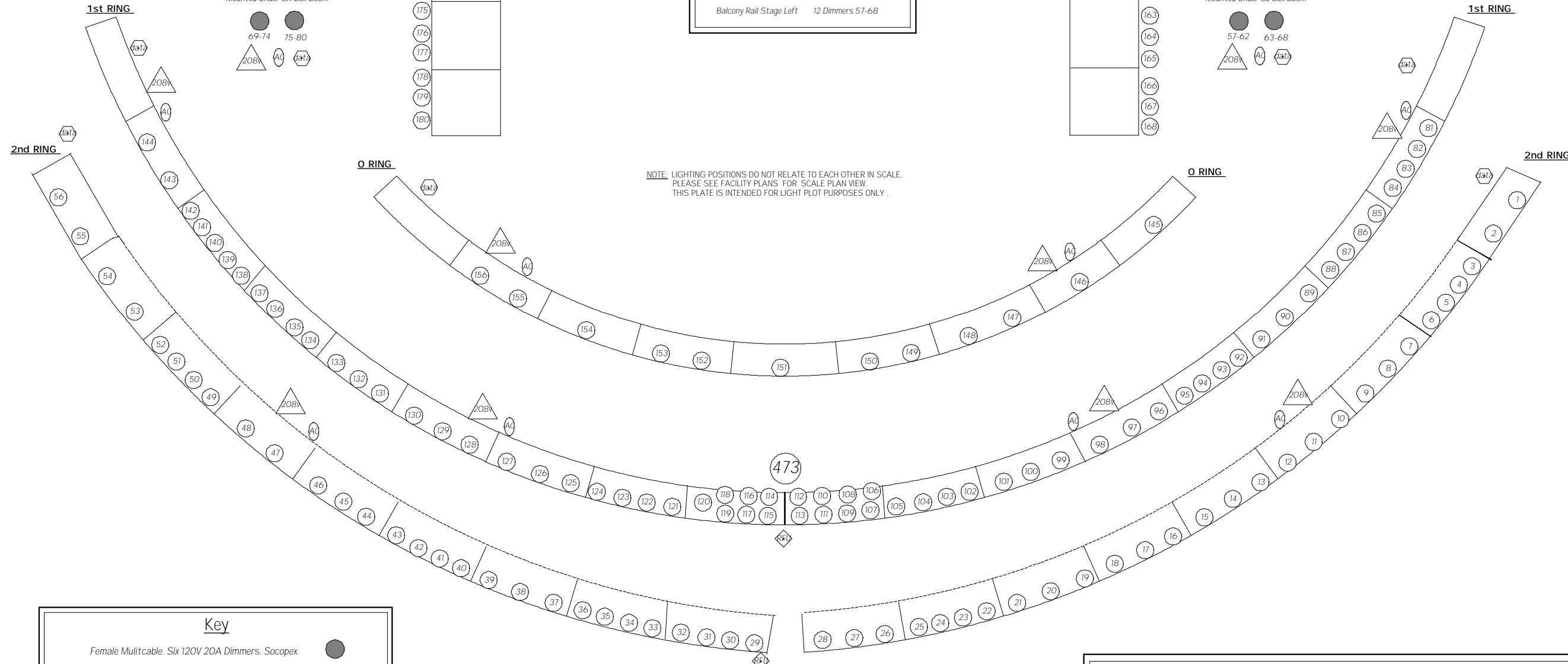
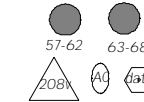
Dimmers at a Glance

Position	20A Dimmers
0 Ring	12 Dimmers. 145-156
1st Ring	64 Dimmers. 81-144
2nd Ring	56 Dimmers. 1-56
Stage Right Box Boom	12 Dimmers. 169-180
Stage Left Box Boom	12 Dimmers. 157-168
Balcony Rail Stage Right	12 Dimmers. 69-80
Balcony Rail Stage Left	12 Dimmers. 57-68

Stage Left Box Boom



Balcony Rail
Mounted Under SL Box Boom



NOTE: LIGHTING POSITIONS DO NOT RELATE TO EACH OTHER IN SCALE.
PLEASE SEE FACILITY PLANS FOR SCALE PLAN VIEW.
THIS PLATE IS INTENDED FOR LIGHT PLOT PURPOSES ONLY.

Key

- Female Multicable. Six 120V 20A Dimmers. Socopex.
- Single Stage Pin 120V 20A Circuit.
- 208V 20A LP6 Female Twistlock. Not Dimmed.
- 120V 50 A Female Stage Pin Receptacle. Dimmed.
- 120V 20A Edison (U-Ground) Duplex Receptacle. Not Dimmed.
- Patchable Ethernet Node. Female RJ45.
- DMX Universe 2 (Dimmers 513-1024). Female 5-pin XLR.
- ETC Remote Focus Unit. 6-pin Female XLR.



Front of House Dimmer Layout

Power Center for the Performing Arts. University of Michigan

Phase Two Renovation: Completed October 6, 2000

System Layout by: M. A. Berg, E. Katz, B. LaRue

Equipment by: Electronic Theatre Controls
Tobins Lake Studios

Renovation Executed by: K & F Electric

SCALE	DATE	REVISED	DRAWN BY
No Scale	10/11/00		M. A. Berg P. Masck

PLATE

2

OF 2