



**SCHOOL OF MUSIC,  
THEATRE & DANCE**

UNIVERSITY OF MICHIGAN



*Find  
Your Path*

**A GUIDE FOR FUTURE STUDENTS**

2024-25

**September 1, 2024**

Applications Open

**October 1-December 1, 2024**

Financial Aid Applications Open

**December 1, 2024**

Undergraduate/Graduate\* Application Deadline

**January/February 2025**

SMTD Auditions/Interviews

**Mid-March 2025**

SMTD Admissions Decisions Out

**March 31, 2025**

Financial Aid Applications Due

**April 1, 2025**

SMTD Scholarship Decisions Out

**April 15, 2025**

Graduate Decision Deadline Day

**May 1, 2025**

Undergraduate Decision Deadline Day

**May 6, 2025**

Housing Applications Due

**June-August 2025**

Orientation

**August 25, 2025**

First Day of Classes at SMTD

Visit [myumi.ch/2mpwn](https://myumi.ch/2mpwn) for the most up-to-date deadlines

*\*Some graduate programs have different deadlines; see page 17.*



# The SMTD Experience

An extraordinary education. Boundless opportunities to explore and collaborate. Mentorship from a world-class faculty of scholars and artists. Belonging to an inclusive, supportive community of peers in one of the best college towns in the country. At the University of Michigan School of Music, Theatre & Dance – a renowned school of performing arts housed within a leading Big 10 university – your experience will be as multifaceted as you are.

We acknowledge that the University of Michigan resides on the ancestral, traditional, and contemporary lands of the Anishinaabeg – The Three Fire Confederacy of the Ojibwe, Odawa, and Potawatomi Nations – as well as the Wyandot Nation. In particular, the university resides on land gifted by the three Nations and the Wyandot Nation, along with many other Indigenous Nations, in the 1817 Treaty of Fort Meigs. We acknowledge the language of “gift” in the original treaty entails mutual relationships between treaty parties, respect, and obligation on the part of the settlers. We advocate for Indigenous struggles against ongoing settler-colonization and strive for a decolonized future.



# Join Our Vibrant Community

## The 2023–24 SMTD Community

<b>848</b> Undergraduate Students	<b>795</b> Music Students
<b>283</b> Graduate Students	<b>163</b> Theatre Students
<b>215</b> Faculty Members	<b>91</b> Musical Theatre Students
<b>5:1</b> Students-to-Faculty 84% of SMTD courses have fewer than 22 students	<b>85</b> Dance Students
<b>97%</b> Student Retention	

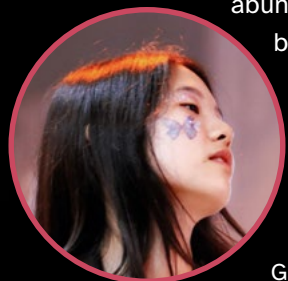
## Incoming First-Year Class Profile

<b>27.3%</b> Michigan Residents	<b>70.1%</b> Out-of-State Students	<b>2.6%</b> International Students
<b>31</b> Average ACT*	<b>1389</b> Average SAT*	

\*U-M will be test-optional for the 2024-25 admissions cycle.

<b>3.8</b> Average GPA	<b>40.2%</b> are Asian, Black, Hawaiian, Hispanic, or multiracial U.S. citizens & permanent residents
<b>8.2%</b> are first-generation students	

"I chose SMTD because of its exceptional atmosphere, outstanding programs, distinguished professors, and abundant performing opportunities. Most importantly, throughout my interactions with SMTD – whether browsing the official website, interviewing with professors, or attending Zoom meetings with my academic advisor – I have always felt incredibly welcomed. If I were to describe SMTD using a color, it would be golden. This golden light represents significant support for me to pursue my dreams."



**Nina H.**

BFA '28, Performing Arts Technology  
Guiyang, China

# Conservatory Life at a World-Class Public University

As an SMTD student, you will have the rare opportunity to engage in a rigorous performing arts curriculum – exploring abundant opportunities to perform, collaborate, and conduct research – while also being immersed in the larger University of Michigan realm. Liberal arts coursework constitutes an important part of every SMTD major, but you can choose to go further, pursuing a minor or a dual degree at any U-M school or college. Choose from among 1,500 student organizations – or start your own. Participate in a research project through U-M's Undergraduate Research Opportunity Program. Join the fun on football Saturdays. Create your own customized, unforgettable experience.

## Customize Your Education

**1 in 5** SMTD students pursued a double major within SMTD or a dual degree with a unit outside of SMTD in 2023–24. The most popular dual degrees are computer science; communication and media; biopsychology, cognition, and neuroscience; business administration; cognitive science; political science; and economics.

**8 Minors within SMTD:** dance • global & ethnic performance studies • music • musical theatre composition • performing arts management & entrepreneurship • playwriting • popular music • theatre design & production

# Explore Our Degree Offerings

## Undergraduate Degrees

### Bachelor of Fine Arts (BFA)

Dance  
Interarts Performance  
*(with Stamps School of Art & Design)*

Jazz & Contemplative Studies  
Musical Theatre  
Performing Arts Technology  
Theatre Design & Production  
Theatre Performance  
*Acting, Directing*

### Bachelor of Music (BM)

Composition  
Jazz & Contemporary Improvisation  
Music & Technology  
Music Education  
*Choral, Instrumental, Jazz*  
Music Theory  
Musicology  
Performance  
*Piano, Winds & Percussion, Strings, Organ, Voice*

### Bachelor of Musical Arts (BMA)

Multidisciplinary Studies  
Performance  
*Piano, Winds & Percussion, Strings, Organ, Voice*

### Bachelor of Science (BS)

Sound Engineering

### Bachelor of Theatre Arts (BTA)

### Bachelor of Arts (BA)

Music

## Graduate Degrees

### Master of Arts (MA)

Composition  
Media Arts

### Master of Fine Arts (MFA)

Dance

### Master of Music (MM)

Chamber Music  
Collaborative Piano  
Composition  
Conducting  
*Band/Wind Ensemble, Choral, Orchestral*

### Early Keyboard Instruments

Improvisation  
Music Education  
Performance  
*Piano, Winds & Percussion, Strings, Organ, Voice*

### Piano Pedagogy & Performance

Sacred Music  
Wind Instruments

### Specialist in Music (SM)

Chamber Music  
Collaborative Piano  
Performance  
*Piano, Winds & Percussion, Strings, Organ, Voice*

### Doctor of Musical Arts (DMA)

Collaborative Piano  
Composition  
Conducting  
*Band/Wind Ensemble, Choral, Orchestral*  
Jazz & Contemporary Improvisation  
Performance  
*Piano, Winds & Percussion, Strings, Organ, Voice*  
Piano Pedagogy & Performance

### Doctor of Philosophy (PhD)

Composition & Music Theory  
Music Education  
Music Theory  
Musicology  
*Ethnomusicology, Historical Musicology*  
Performing Arts Technology

### Graduate Certificate

Arts Entrepreneurship & Leadership  
Musicology  
Music Theory Pedagogy



Explore our offerings and find a degree tailored to your interests at [myumi.ch/AWM1p](https://myumi.ch/AWM1p)



# We're Dedicated to Your Success

Our faculty are highly skilled and dedicated teachers who are deeply committed to student support and success. They are also celebrated artists and scholars – they grace the world's stages, lead scholarly journals, and conduct and play in internationally renowned bands and orchestras – all while providing students with thoughtful instruction and unparalleled knowledge.

## Meet Our Faculty

Learn more about our talented faculty! To view our full list or search by academic department, please visit [myumi.ch/ez8gy](https://myumi.ch/ez8gy)



"If I could have chosen to teach and perform at any performing arts school in the nation, it would have been at the University of Michigan. I feel so fortunate to have landed at SMTD, and since arriving to join the faculty last year, I have found a community of creative, generous, and driven artists and students that has far exceeded my expectations. This is a supportive and forward-thinking space that embraces everything I love about making music."

**Jason Fettig**  
Director of Bands





Stearns Building

# Creativity Lives Here

From the historic Hill Auditorium, one of the world's greatest concert halls, to the Brehm Technology Suite, a hub for creative and technological innovation, our students perform, study, rehearse, and collaborate in a wide array of places and spaces designed to support all facets of performing arts education. Among dozens of venues and facilities across campus where students study and perform, here are a few highlights of the buildings that play an important role in daily life at SMTD.



## Bell Towers

Ann and Robert H. Lurie Carillon in the Lurie Tower and the Baird Carillon in the Burton Memorial Tower

U-M boasts two bell towers, one on North Campus and one on Central Campus, which serve as campus landmarks and enable frequent carillon performances throughout the year.

## Dance Building

With 24,000 square feet of performance and academic spaces, the Dance Building features four large, flexible studio-classrooms, including a performance venue with seating for more than 100 and a dedicated screendance studio.

## Earl V. Moore Building

The Moore Building includes classrooms, a dedicated music library, studios, and practice rooms for study, creation, and collaboration. The William K. and Delores S. Brehm Pavilion includes a student common area, two performance halls for large ensembles, two rehearsal halls, a high-tech lecture hall, and the state-of-the-art Brehm Technology Suite.

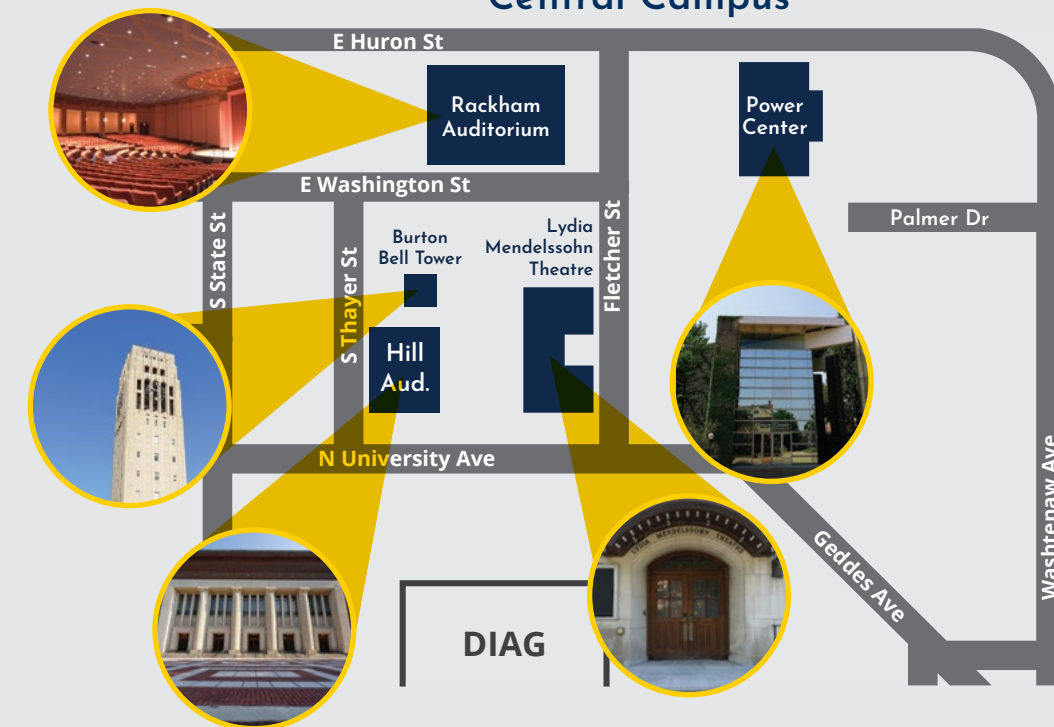
## Hill Auditorium

This 3,500-seat concert hall is renowned for its impeccable acoustics and is the home for our orchestra, band, and choir performances.

## Lydia Mendelssohn Theatre

In this 600-seat theatre, many of our smaller, more intimate theatre, musical theatre, dance, and opera productions are held.

## Central Campus



## Power Center for the Performing Arts

This 1,300-seat theatre is primarily used for our dance, musical theatre, theatre, and large-scale opera performances.

## Walgreen Drama Center

The sleek and modern home for musical theatre and theatre & drama students includes the Arthur Miller Theatre, Stamps Auditorium, state-of-the-art classrooms, and studios for design, sound, screen acting, and performance, as well as extensive theatre shops.

### Arthur Miller Theatre

A performance space used for theatre & drama and musical theatre, this intimate venue can accommodate proscenium and thrust stage configurations and an audience of up to 280.

### Stamps Auditorium

This 450-seat auditorium is home to classes, rehearsals, exhibits, and performances of all kinds.



To learn more about our campus and take a virtual tour, please visit [myumi.ch/zwD9d](http://myumi.ch/zwD9d)

# We Are Better Together

The School of Music, Theatre & Dance fully embraces that academic and artistic excellence are an indispensable component of our institutional commitment to diversity, equity, and inclusion.

The SMTD Office for Diversity, Equity & Inclusion provides vital resources, grant funding, programming, and guidance to the community as well as abundant opportunities for students to feel connected. DEI principles and goals infuse every aspect of the school, with students acting as essential agents of change.

The SMTD community values inclusivity in the broadest possible terms, encompassing the equitable and fair treatment of all. We aspire to create a learning environment and curriculum fully representative of diversity, not only with respect to social identity markers such as race, ethnicity, social class, sexuality, religion, gender, and ability, but also diversity of thought, experience, and outlook upon the world.



"To be a part of programming and witness events that feature people like me in such a prestigious field has been the highlight of my time here. It only gives me more strength to continue what I do as an artist."



**Naomi R.**

BFA '25, Interarts Performance  
Miami, FL



# Engage Your Entrepreneurial Spirit

In the EXCEL Lab, you will find the resources you need to launch and sustain a life in the arts. EXCEL is committed to supporting you as you consider career paths, seek meaningful internships, and develop entrepreneurial initiatives, helping you emerge from Michigan poised to claim your individual leadership potential. We take a personalized, collaborative approach to professional development by exploring your individual vision and goals and then connecting you with the resources you need to thrive. Through workshops, one-on-one mentoring, and more than \$100,000 in student project and venture funding, EXCEL will help you turn your ideas into action.



“EXCEL is one of the main components that propels this performing arts institution ahead of the rest. During my time at Michigan, the EXCEL Lab has been steadfast in nurturing an ecosystem of professional development, providing intentional resources and mentorship, and encouraging students to create their own opportunities to learn and grow outside of the classroom. The support that EXCEL offers is pivotal in creating our field’s future artistic leaders.”

## Evan K.

BTA '25, Theatre Studies  
St. Johns, MI

During the 2023-24 school year...

**2,087** total attendees engaged in an EXCEL coaching session, event, funding opportunity, or class

**\$137,110** in funding was awarded to student projects, ventures, and internships

**60+** student-led projects and ventures were funded

**13** students participated in immersion trips to the Yale Innovation Summit in New Haven, CT, and the Critiques of Power in the Arts Global Classroom and Conference in Vienna, Austria

**21** students were placed in paid internships with EXCEL partner organizations or awarded funding for housing & transportation through the EXCEL Internship Fund

**28** newsletters were published with **100+** unique jobs, internships, and professional opportunities (at U-M and beyond!)

**584** students enrolled in **25+** entrepreneurship & leadership courses

# Prioritize Well-Being

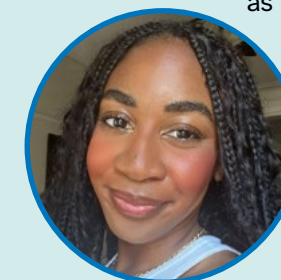
SMTD prioritizes your well-being, which is crucial for a successful arts career. Tailored services address the unique demands of performing artists, ensuring expert care to help you thrive.

First-year students receive musculoskeletal screenings and personalized home exercise programs. Hearing screenings, free earplugs and fittings, voice evaluations, nutrition counseling, wellness coaching, hand screenings, and individual appointments for pain or injury are available for all students. SMTD offers a rich variety of wellness programs like meditation, yoga, and Alexander Technique mini-lessons. The Wellness Program’s YouTube playlist includes numerous videos on well-being practices and injury-prevention strategies. For-credit classes, including Wellness for Performing Artists, Yoga, Alexander Technique, and more, are offered each semester. The Wellness Ambassador team fosters a supportive community through initiatives like the SMTD Peer-to-Peer Support Network and stress-relieving events with therapy dogs. Funding support is provided through the SMTD Mental Health Awareness Microgrants and the Ergonomics Grants.

Additionally, a Counseling and Psychological Services (CAPS) counselor dedicated to SMTD provides confidential support for students’ mental health needs. CAPS offers therapy, crisis intervention, psychiatric evaluation, medication monitoring, and referrals.



“Working in the Wellness Program has truly been a blessing, filled with great community and opportunities to learn and grow as leaders! Navigating college can be challenging, so I am proud to be part of a program that can provide SMTD students with multiple resources that help us all learn how to take care of ourselves.”



## CiCi B.

BFA '25, Dance  
Ypsilanti, MI



# Wherever You Go, #ForeverGoBlue!

SMTD prepares students for success in myriad fields. Our alumni can be found onstage and behind the scenes in the world's great theatres and concert halls. They are impacting lives in classrooms and driving change in arts organizations across the globe. Beyond the arts, SMTD alumni apply their discipline and determination to whatever path they take.

Our alumni have won **Emmys, Grammys, Oscars,** and **Tonys.** They've been selected as **MacArthur Fellows** and awarded **Pulitzer Prizes** and the **National Medal of the Arts.** They've sold out **Madison Square Garden,** played the title character in the hit musical **& Juliet** (twice!), and earned an Oscar

nomination for the music of **American Fiction.** They have overcome a stutter to create the iconic voices of **Darth Vader** and **Mufasa.** They are editors and publishers of prestigious scholarly journals across the world. They've become community leaders and advocates for diversity, equity, and inclusion by creating organizations like the **Sphinx Organization.** They have taught and pursued their research at **MIT, Stanford, Yale, Harvard,** and right here at **Michigan.** They have instilled a love of music in thousands of children through music education (and chances are, if you're from Michigan, you've been taught by one of **over 400 U-M alums** teaching music across the state).



"Coming from a public arts high school in Washington, DC, I auditioned at NINE schools to figure out what I really wanted to do for college. After a weekend sleeping on the floor of a friend's dorm room, I fell in love with Michigan and the vastness of the university. I could study with top professors in any topic alongside an incredible music program. I could play for weird musicals in basements and get up the next morning to sing along with the marching band at Michigan Stadium. Michigan was a life-changing experience that I continue to benefit from, 20 years on."

## Amy K. Bormet

BFA '06, Jazz Studies, Piano  
Pianist, vocalist, composer,  
and founder of the annual  
Washington Women in  
Jazz Festival

# Take the Next Step: Applying to SMTD

Thank you for taking the time to learn more about the vibrant, diverse SMTD community. We hope you'll consider applying. SMTD is proud to have students with widely varied backgrounds, experiences, and skill sets. We look forward to talking with you about the range of our programs, our outstanding faculty, and the vast resources and opportunities available through the greater U-M community.

Applying for undergraduate admission is a two-part process. Applicants must submit:

- **Common Application** – This serves as your academic application for the U-M. You'll provide additional materials such as transcripts and SAT/ACT scores (optional).\*
- **SMTD Artistic Profile** – This is what shows SMTD faculty and staff who you are as an artist. Applicants must submit a completed Artistic Profile for each program to which the student is applying.

All application materials must be submitted on or before December 1.

*\*As of the 2024-25 application cycle, U-M will be test-optional. Prospective students have the choice to submit standardized test scores (ACT/SAT), if they desire, as part of their application.*

To learn more about the SMTD Artistic Profile, please visit [myumi.ch/W2b6k](https://myumi.ch/W2b6k)



"I chose to attend SMTD for its excellent faculty, breadth of resources such as the EXCEL Lab, and the wide range of live performances that happen at the university and in Ann Arbor. I love listening to and playing different kinds of music, and I'm excited that SMTD is open to people like me playing both sides of the classical/jazz aisle."

## Gavin A.

MM '25, Trumpet Performance  
St. Petersburg, FL

All graduate applicants must submit an Artistic Profile application for each program to which they are applying.

In addition, doctoral, MA, MFA, and graduate certificate applicants must submit a Rackham Graduate School application.

**All application materials must be submitted on or before December 1, with the exception of the following program-specific deadlines:**

- **November 1:** MFA in Dance
- **December 10:** PhD in Performing Arts Technology
- **January 5:** PhD in Music Theory
- **February 5:** MM in Music Education Summer Program
- **March 15:** Certificate in Arts Entrepreneurship & Leadership

## Find Answers

There are many paths that prospective students travel to gain the skills needed to be competitive for admission. If you think you're a great fit for the U-M School of Music, Theatre & Dance, we encourage you to apply!

For questions about SMTD and our admissions process:

[smtadmissions@umich.edu](mailto:smtadmissions@umich.edu) • 734.764.0593

For questions about auditions and interviews:

[smtdauditions@umich.edu](mailto:smtdauditions@umich.edu) • 734.763.6677

# Cost, Scholarships & Financial Aid

If your dream is to attend SMTD – and you are selected for admission – we will do our best to help make your dream a reality. We are committed to admitting the most talented and promising performing artists and scholars, regardless of financial means.

We encourage you to explore all of your financial aid options – grants, scholarships, work-study, and loans – so you can pursue your dreams at Michigan. Most of our students are pleasantly surprised by how much support is available.

Visit the U-M Financial Aid website at [finaid.umich.edu](http://finaid.umich.edu) to explore the costs of a Michigan education for in-state and out-of-state students. To complete a FAFSA, please visit [studentaid.gov](http://studentaid.gov). **U-M's federal FAFSA code is 002325**

Undergraduate students who wish to apply for need-based institutional grants are also required to complete a CSS Profile at [cssprofile.collegeboard.org](http://cssprofile.collegeboard.org). **U-M's CSS code: 1839**

SMTD commits more than \$3.5 million annually in merit-based, need-informed scholarships. We reward artistic and academic excellence while also considering a student's complete financial resources. SMTD is not able to offer scholarships to all admitted students, but we assist as many as possible each year. For more information on scholarships, visit [smtd.umich.edu/admissions](http://smtd.umich.edu/admissions).

For questions about SMTD and our scholarships and financial aid process: [smtd.scholarships@umich.edu](mailto:smtd.scholarships@umich.edu)

**SMTD encourages applicants to submit their FAFSA and CSS Profile by March 1, including all supporting materials.**

“Attending the University of Michigan as a first-generation student from a single-immigrant household has been an incredible opportunity for me. I would never have imagined the chance to learn and grow in such a prestigious institution with amazing faculty, and I am incredibly grateful. The supportive communities and the endless opportunities offered at Michigan have allowed me to broaden my horizons beyond my identity as a musician.”

**Alondra D.-N.**

BM '26, Viola  
Naples, FL



# A Guarantee for Michigan Residents

Many students and families across the country are concerned about the rising cost of college. For many in-state undergraduate students, attending U-M costs less today than it did a decade ago. Our Go Blue Guarantee covers the full cost of tuition for up to four years of full-time undergraduate study on the Ann Arbor campus for Michigan residents with a family income of \$75,000 or less and assets of \$75,000 or less. Some families earning more also receive tuition assistance. **We are the only public university in Michigan to cover 100% of demonstrated financial need of in-state students, making U-M the lowest-cost option for them.**

[GoBlueGuarantee.umich.edu](http://GoBlueGuarantee.umich.edu)



## FREE TUITION

For families with incomes up to \$75,000 and assets below \$75,000

## TUITION SUPPORT

For families with incomes up to \$180,000

*Four years for qualifying in-state student  
Ann Arbor Campus*



“I have had the most wonderful experiences at the University of Michigan: I have grown both as a musician and as an individual; I have made friends that will last a lifetime; I have furthered my studies while also developing and exploring new interests. It truly takes a village to make a musician, and I am so appreciative of donor support in helping me pursue my passion. As I progress through my career and all of the ups and downs that I know are to come, it fills my heart with such peace to know that so



many wonderful people have supported me and believed in me.”

**Jackie G.**

BM '25, Clarinet  
Naperville, IL

# Global Exploration

At SMTD, you will have numerous opportunities to further your education abroad. You could take courses for credit independently or with SMTD faculty. You may also have the chance to perform internationally with SMTD ensembles, attend workshops, and participate in festivals and competitions around the globe. In recent years, SMTD students have traveled with faculty to countries including Argentina (pictured bottom left), Austria, Ireland (pictured top left), Italy, Japan (pictured right), Poland, Romania, and Spain.



“This trip was filled with such great opportunities to experience Japanese culture. I am already starting to see the influence that looking at Japanese historical dress has on my perception of fashion and the ways it has influenced my designs. I am incredibly grateful to everyone who made this possible and am thrilled for the future students who will be taking this trip.”

## Ellie V. E.

BFA '26, Theatre Design & Production  
Holland, MI



# Meet the Dean

Thank you for your interest in the School of Music, Theatre & Dance. Our school is an incredibly collaborative, diverse community that will offer you a world of possibility. We will support your unique college experience through individualized plans of study, abundant performance opportunities, extensive career development resources, and instruction from our expert faculty. Wherever your passions lie, SMTD will help you cultivate your talents and prepare for a successful career. I encourage you to apply, and I hope to welcome you into the SMTD family.

## David Gier, BM '83, Trombone Performance

Dean and Paul C. Boylan Collegiate Professor of Music



The information listed in this brochure is accurate as of **August 1, 2024**.  
Visit [smtd.umich.edu](https://smtd.umich.edu) for the most up-to-date information about SMTD.



umichsmt  
[smt.umich.edu](http://smt.umich.edu)



★  
Interlochen  
Center for  
the Arts

★ Blue Lake  
Fine Arts Camp

★  
Grand Rapids



★  
Detroit

★  
Ann Arbor



**SCHOOL OF MUSIC,  
THEATRE & DANCE**  
UNIVERSITY OF MICHIGAN